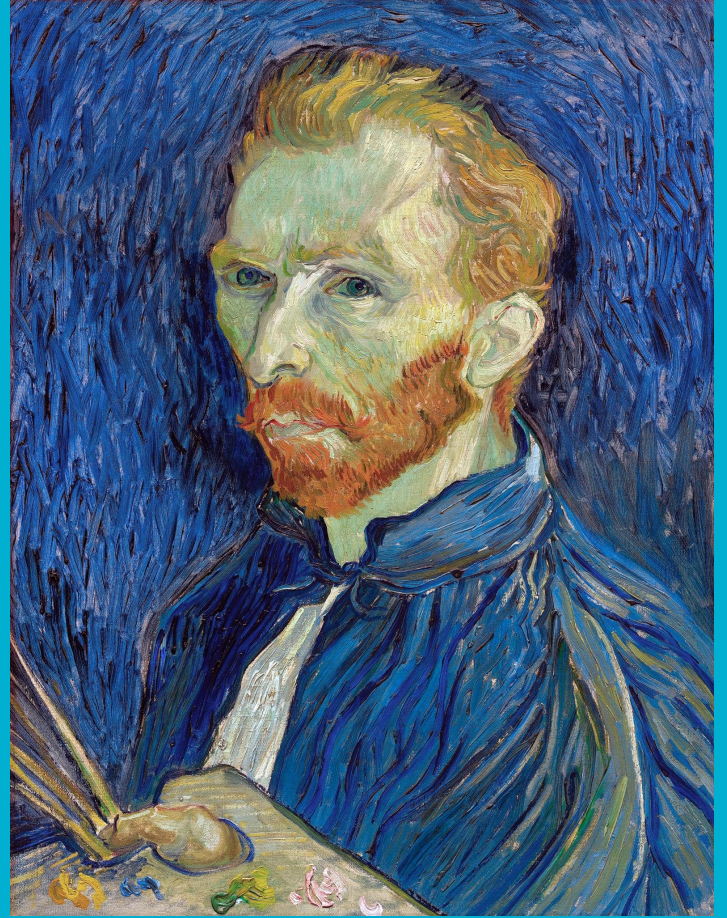


Vincent van Gogh

1853-1890





KEY:



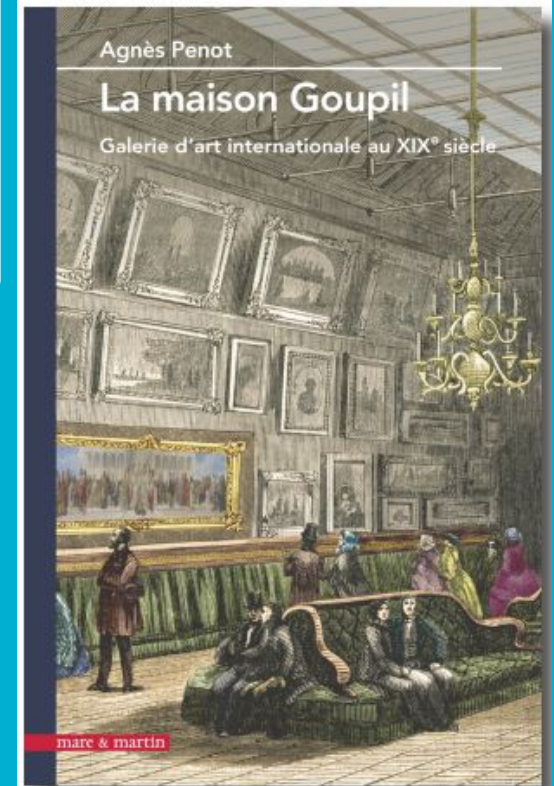
= Zundert



= The Hague

- - - = Travelled

Goupil and Co.



GOUPIL AND CO.



1873-1876



Jean Francois Millet



Camille Corot



**“I want to
give the
wretched a
brotherly
message.”**

**- Vincent
van Gogh**

Van Gogh's Artistic Career Begins 1880



Anton Mauve



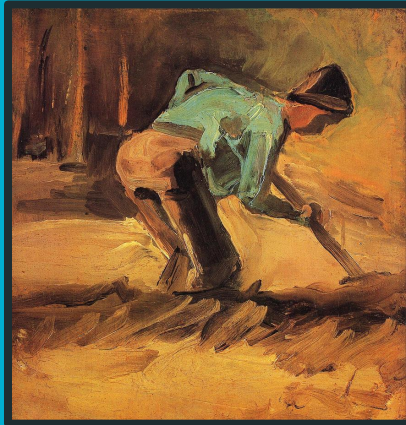
Anton Mauve Paintings

1882



**Art grew Bolder
and more Assured**

1881



1882 Oil Paintings



1884/85

Sociological Criticism in Art:

- Aimed to develop a critical analysis of society through artistic practises

The Potato Eaters



The Weavers



KEY:



= Antwerp Academy



= Paris

--- = Travelled



Henri de
Toulouse-Lautrec

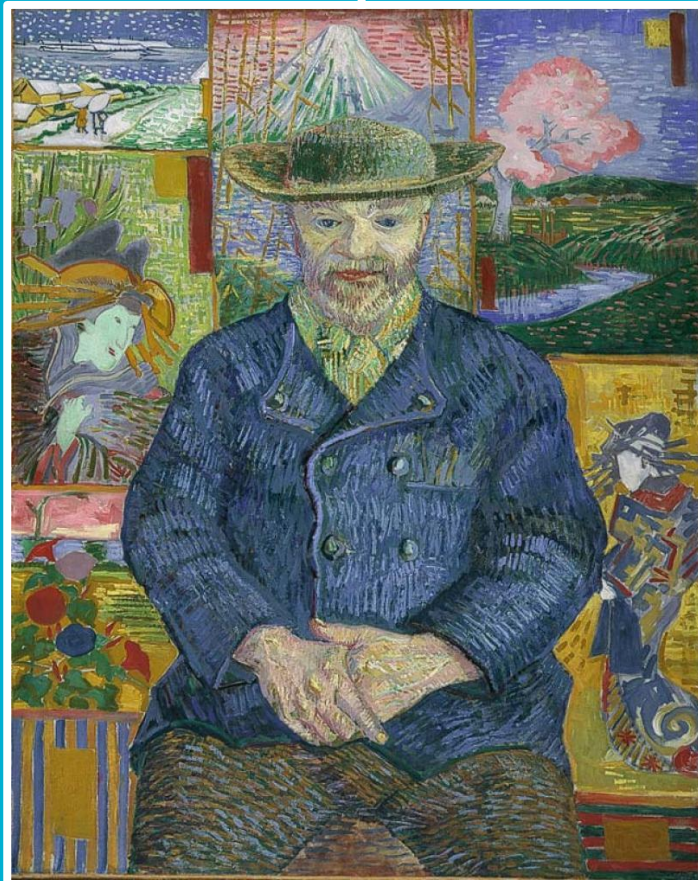


Paul Gauguin





Van Gogh's Brushstyle



Pere Tanguy - 1887



The Postman Roulin - 1888



Cafe Terrace at Night – Sep 1888



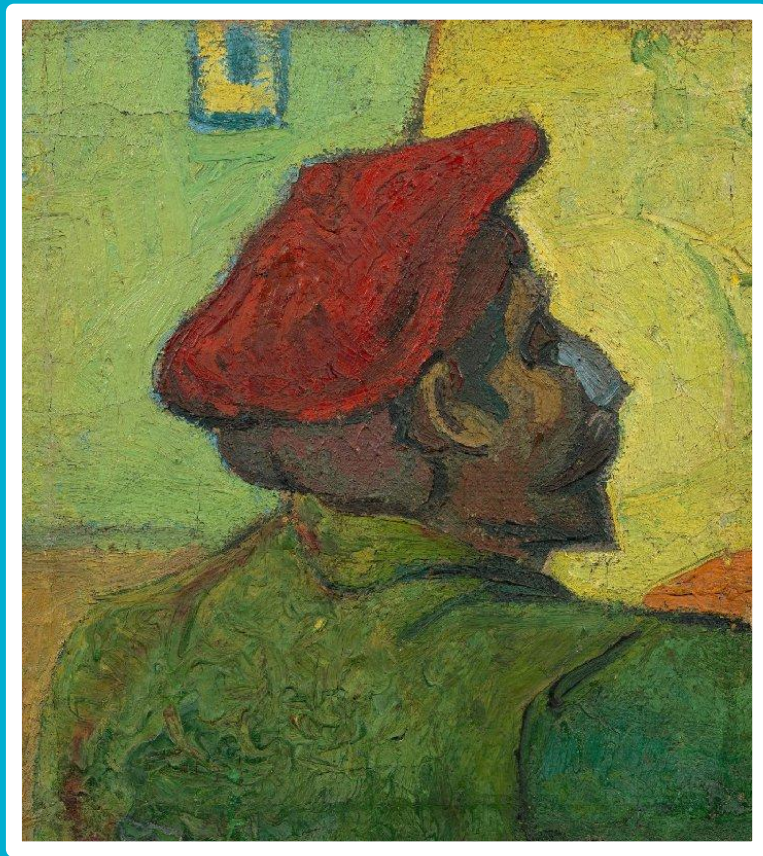
THE BEDROOM AT ARLES



The Yellow House - 1888



**Paul Gauguin's Portrait of
Vincent van Gogh Painting**



**Vincent van Gogh's Portrait of Paul
Gauguin in The Yellow House**



Vincent Van Gogh's Self Portraits
with Bandaged Ear - Jan 1889



STARRY NIGHT



Fun Facts

The Starry Night depicts Van Gogh's view from the asylum

According to the University of California, van Gogh painted the planet Venus in the starry night

The Manhattan Museum of Modern Art is the proud owner of Starry Night

1890



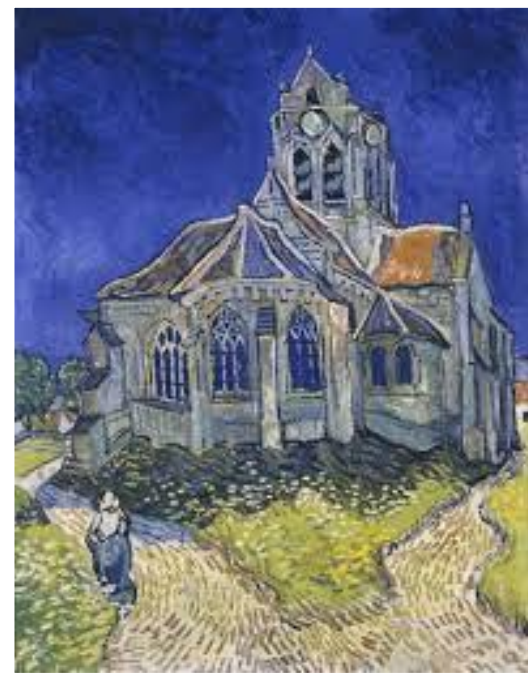
A Peasants Cottage



The River Valley



The Town Hall



The Church at Auvers

27 / 7 / 1890



Van Gogh's Upstairs Bedroom
- Auvers, France



Vincent's devoted Brother Theo
van Gogh

Impressionism vs Post-Impressionism

Impressionism

- Originated in Late 19th Century in Paris
- Artistic reaction to the rapidly changing urban environment
- Characteristics include the use of vibrant colours, harsh and spontaneous brushstrokes, and accuracy of light, quality, and visual subjects
- Artists: Claude Monet, Camille Pissarro and Alfred Sisley.

Post Impressionism

- Originated in Early 20th century in Western Painting
- Artistic extension and rejection of Impressionism limitations
- Characteristics include vibrant colours, short brushstrokes of broken colour, more ambitious expression of emotion/subjects
- Artists: Paul Cezanne, Georges Seurat, Vincent van Gogh, and Paul Gauguin.

Impressionism vs Post-Impressionism

Impressionism



Post-Impressionism

